

Umaboy[®]

SHREE UMIYA F-TECH MACHINES



WHERE QUALITY & TECHNOLOGY IS PRIORITY

AUTO PLANT FOR MODULAR FURNITURE

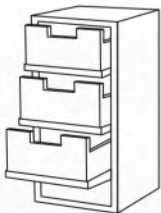
Creating Integrated System for Modular Furniture Production Process

The complete work cycle of Cutting, Drilling, and Edge Banding is carried out automatically, which results in maximum productivity and zero down time.

Cutting > Drilling > Edge Banding



IDEA



CUTTING



DRILLING



EDGE BANDING



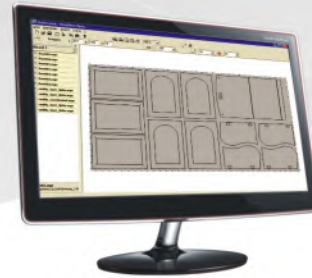
ASSEMBLY



OUTPUT



Today's panel furniture production is no longer imaginable without commanding, reliable machines. Umaboy offers you exactly the right system to suit your needs. Having an optimum solution that combines **Cutting, Drilling and Edge Banding**, thereby guaranteeing your success. For mass-production furniture at a perfect price/performance ratio your customers will be satisfied.

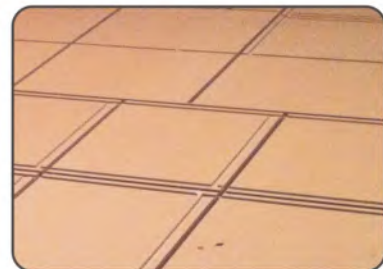


Computer Software

Designing, BOM, Cutting Plan, Drilling Plan will be carried out by designing software.



RAW MATERIAL STOCK



CUTTING



BARCODE PASTING



CNC BEAM SAW

Maximum production output with excellent cutting of multiple panels





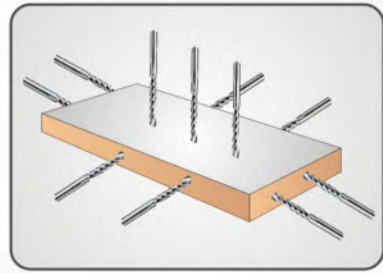
VERTIX 249



Complete machining on all 5 sides in one clamping operation. With the Vertix the machine does everything automatically.



SCANNING



DRILLING



EDGE BANDING



EXPERT 4600



MODULAR FURNITURE



MUKI MACHINERY LTD.

info@mukimachinery.com

www.mukimachinery.com

©ForSalesInquiry:+254713522406



East Africa Agent : **MUKI MACHINERY LTD.**

P.O.BOX - 00100Nairobi, Kenya